

Wilson's Patent Box Cover AND Cover Fasteners

PATENT HOOK FASTENER.

ALL KINDS OF

PATENT SELF-LOCKING SPRING FASTENER.

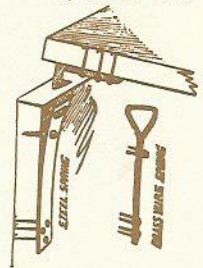


SHIPPING CASES

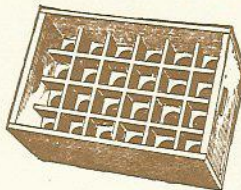
PEDDLING BOXES

FOR BEER, ALE, SODA, SELTZER, ROOT BEER, ETC.

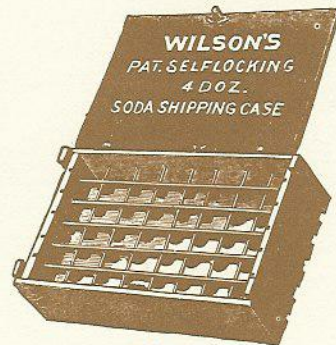
MADE TO FIT HALF-PINT SODA OR GINGER ALE BOTTLES.



STEEL BARBED NAILS.



Cottonwood Partitions and Centres.



Cottonwood Ends.

The above Fastener consists of a steel or brass wire spring, fastened to the inside of the front of the case, and a malleable iron strike or catch fastened to the cover.

It is entirely different from other self-locking fasteners, and there is two features we claim for it, that can not be found in other self-locking fasteners—

The Strike or Catch can not be knocked off or damaged.

Any shrinkage of the cover does not effect the locking of the case.

Directions for Opening.

Remove the label from front of case, then insert a lead pencil or nail through the small hole, push back the spring, at the same time raise the cover.

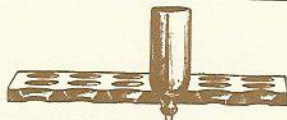
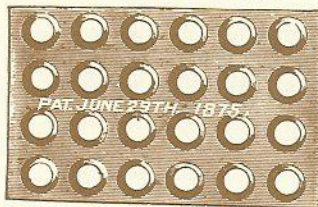
5 1/4 Inches Deep.

Made to fit Pint or Quart Bottles.

PATENT PERFORATED CENTRES.

FOR SODA BOXES AND CASES.

Made of 3/4 inch Cottonwood.

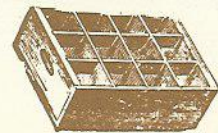


In our Patent Perforated Centres we bore 1 1/4 inch instead of 1 1/2 inch holes, thereby leaving more space between the holes, which makes the Centres a great deal stronger than the common way of making them. Each hole is countersunk, so that it fits the shoulder of the bottle, thereby making a perfect seat for the bottle to rest in.

We use these Centres in all our best Cases and Boxes.

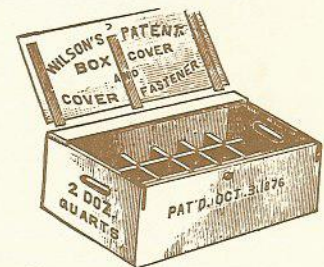


STYLE D.
Made for 5 or 6 Dozen.



SHIPPING CASES.

With Cover and Cover Fastener. Made to fit Pint or Quart Bottles.



[Also for 3 and 4 Dozen Bottles.]

NOTICE.

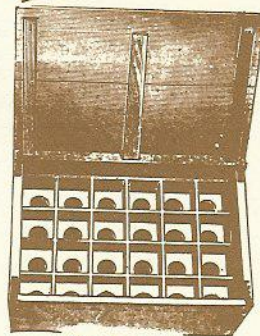
We make cheaper grades of Shipping Cases and Peddling Boxes, also all kinds of Export Cases, prices of which we will furnish on application.

If you want cases or boxes different from any shown in our catalogue, send us sample of same and we will quote you price.

When ordering from long distances, to save freight, have your cases or boxes shipped in the knock-down shape, bundled, freight on them in bundles is lower by two or three classes.

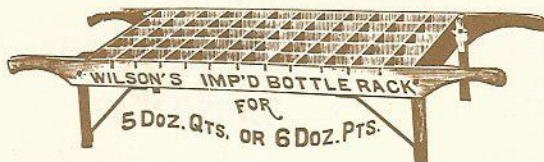


Cottonwood Partitions.



STYLE No. 3.

Style No. 3 Cases and Peddling Boxes are especially adapted for handling Ginger Ale and other carbonated beverages, when put up in Apollinaris or other large bottles. They hold the bottles with the neck down, thus keeping the corks moist, and preventing the leakage of gas.



MANUFACTURED BY

GEORGE WILSON & SONS, TOLEDO, OHIO.

WRITE FOR CATALOGUE AND PRICE LIST.

FIGURE 61. Sturdy packing and shipping cases were important pieces of equipment in the operation of a bottling business, and many box companies produced cases and accessories for every need (N.B.C. 1885).